



## 400 DGC

**ΔP Range:** 0 to 25 upto 600 mm H<sub>2</sub>O  
0 to 1 upto 25 inch H<sub>2</sub>O

### COMBINATIONS

#### Gauge



#### Switch



#### Gauge + switch (with a DIN plug on top)



### Specifications

Accuracy	±2% of the FSD (Ascending)
Migration	No migration. Zero leakage from high to low port
Range	0-25 to 0-600 mm H <sub>2</sub> O or similar ranges in other units
First marking on the scale	15% of the FSD
Sensing element	Diaphragm
Wetted parts	Diaphragm, body material, SS 302 spring & ceramic magnet
Case material & dial size	Stainless steel (SS 304): 2.5", 3.5", 4", 4.5", 6.0" Engineering polymer: 2.5", 4.5", 6" Bayonet: 4.0"
Mounting	Direct, front flange, 2" pipe & surface mounting
Maximum working pressure	35 bar / 500 psi.
Maximum process temperature	0 to 80°C (32 to 175°F)
Body material	Aluminum, SS 316
Diaphragm	Buna-N, Viton, EPDM
Window	Float glass (Std.), toughened glass, acrylic & safety glass
Connection	1/4" NPT - F (Std.), Optional 1/4" BSP - F with adaptor
Porting	In-line, rear, bottom, bottom & vent, in-line & vent, in-line & bottom.
Over range protection	Up to the max. working pressure from high side
Protection for gauge & switch	IP 65 / NEMA-4

### Options

### Switches (Adjustable in 20-80% of FSD)

Liquid filling	1 or 2 SPSTs with a DIN plug
Red follower pointer	1 or 2 SPSTs with a terminal strip
Customer logo	1 SPST with a built in relay
Dual scale	1 or 2 SPSTs with a terminal strip
Colour band	1 or 2 SPSTs with a DIN plug
Filter mesh in (+) connection	
Descending calibration	

### Available in engineering polymer (EP) Case



6.0"



4.5"

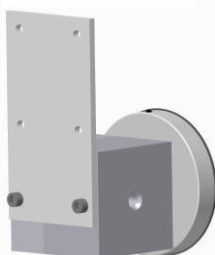


2.5"

- Removable glass
- Strong and durable
- Panel mounting possible
- Condensation can be cleaned
- Light weight

### MOUNTING BRACKETS

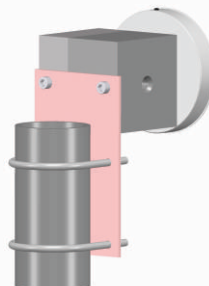
#### Surface mounting



#### Horizontal pipe mounting



#### Vertical pipe mounting



#### Panel / Flange mounting

