

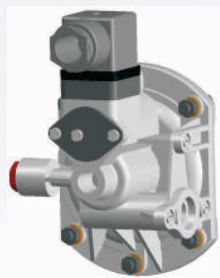


## COMBINATIONS

### Gauge



### Switch

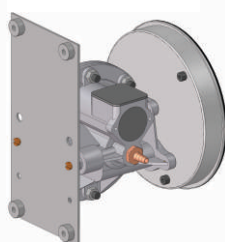


### Gauge+switch (With a DIN plug on top)



## MOUNTING BRACKETS

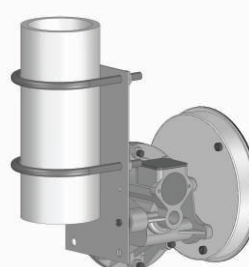
### Surface mounting



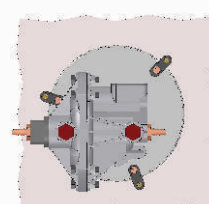
### Horizontal pipe mounting



### Vertical pipe mounting



### Panel / Flange mounting



## 600 DGC

**ΔP Range:** 0 to 25 upto 1250 mm H<sub>2</sub>O  
0 to 1 upto 50 inch H<sub>2</sub>O

## Specifications

Accuracy	±3% of the FSD (Ascending)
Migration	No migration ; Zero leakage from high to low port
Range	0-25 to 0-1250 mm of water
First marking on the scale	15% of the FSD
Sensing element	Diaphragm
Wetted parts	Diaphragm, body material, SS 302 spring & ceramic magnet
Case material	Stainless steel (SS 304)
Dial size in mm (inch)	112mm. (4.4") (Other dial sizes on request)
Mounting	Flush (Std.), 2" pipe & surface mounting on request
Maximum working pressure	2.4 bar / 35psi
Maximum process temperature	0 to 60°C (32 to 140°F)
Body material	Engineering polymer
Diaphragm	Buna-N, Viton, EPDM
Window	Float glass (Std.), toughened glass & acrylic on request.
Connection	1/8" NPT(F)
Porting	In-line, back, In-line & back
Over range protection	Up to the max. working pressure from high side
Protection for gauge & switch	IP 65 / NEMA-4

## Options

Liquid filling (glycerine/silicone)
Customer logo
Dual scale
Color band
Filter mesh in (+) connection
Descending calibration

## Switches (Adjustable in 20-80% of FSD)

1 or 2 SPSTs with a DIN plug
1 SPDT with a DIN plug

*Switch can be added anytime on the field.*

## Accessories supplied with instrument

