



700 DGC

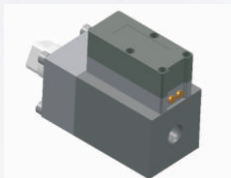
ΔP Range: 0 to 750 upto 40000 mmH₂O
0 to 1 upto 60 psi

COMBINATIONS

Gauge

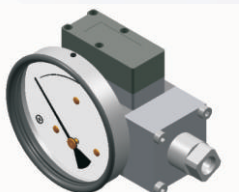


Switch



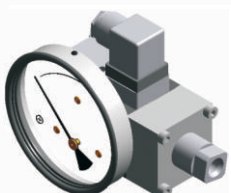
Gauge + switch

(with a terminal strip inside)



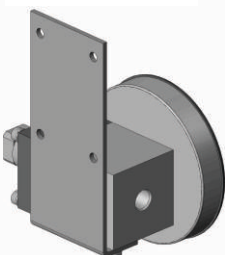
Gauge + switch

(with a DIN plug on top)



MOUNTING BRACKETS

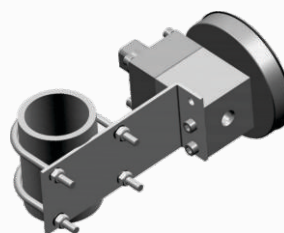
Surface mounting



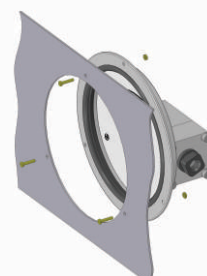
Horizontal pipe mounting



Vertical pipe mounting



Panel / Flange mounting



Specifications

Accuracy	±2% of the FSD (Ascending)
Migration	No migration ; Zero leakage from high to low port
Range	0-0.075 to 0-4 bar or equivalent ranges in other units
First marking on the scale	15% of the FSD
Sensing element	Diaphragm
Wetted parts	Diaphragm, body material, SS 302 spring & ceramic magnet
Case material & dial size	Stainless steel (SS 304): 2.5", 3.5", 4", 4.5", 6" Engineering polymer: 2.5", 4.5", 6"
Mounting	Direct, front flange, 2" pipe & surface mounting
Maximum working pressure	100 bar / 1500 psi
Maximum process temperature	0 to 80°C (32 to 175°F)
Body material	Aluminum, Brass, SS 316 & Monel
Diaphragm	Buna-N, Viton, EPDM
Window	Float glass (Std.), toughened glass, acrylic & safety glass
Connection	1/4" NPT(F) (Std.), 1/4" BSP(F) and others through adaptor
Porting	In-line, rear, bottom, bottom & vent, in-line & vent, in-line & bottom.
Over range protection	Up to the max. working pressure from high side
Protection for gauge & switch	IP 65 / NEMA-4

Options

Liquid filling (glycerine/ silicone)
Red follower pointer
Customer logo
Dual scale
Colour band
Filter mesh in (+) connection
Descending calibration

Switches (Adjustable in 30-100% of FSD)

1 SPST with a DIN plug
1 or 2 SPSTs with a terminal strip
1 SPST with a built in relay
1 or 2 SPDTs with a terminal strip
1 or 2 SPDTs with a DIN plug

Available in engineering polymer (EP) Case



- Removable glass
- Strong and durable
- Panel mounting possible
- Condensation can be cleaned
- Light weight