

## Center Zero Gauge

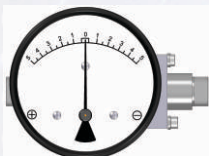


### CZ 300DGC

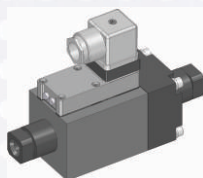
**ΔP Range:** 0.075 - 0 - 0.075 bar  
upto 4 - 0 - 4 bar

#### COMBINATIONS

##### Gauge



##### Switch



##### Gauge+switch (with a terminal strip inside)

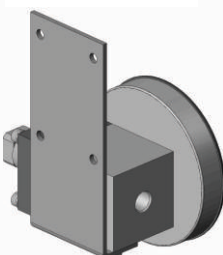


##### Gauge+switch (with a DIN plug on top)



#### MOUNTING BRACKETS

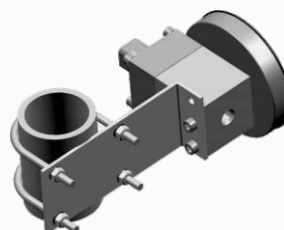
##### Surface mounting



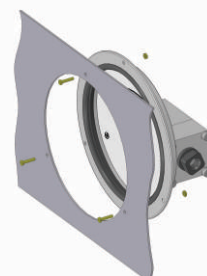
##### Horizontal pipe mounting



##### Vertical pipe mounting



##### Panel / Flange mounting



#### Specifications

Accuracy	±2% of the FSD (Ascending)
Migration	No migration ; Zero leakage from high to low port
Range	0.075-0-0.075 to 4-0-4 bar or equivalent ranges in other units
First marking on the scale	20% of the FSD
Sensing element	Diaphragm
Wetted parts	Diaphragm, body material, SS 302 spring & ceramic magnet
Case material & dial size	Stainless steel (SS 304): 2.5", 3.5", 4", 4.5", 6" Engineering polymer: 2.5", 4.5", 6" Bayonet: 4"
Mounting	Direct, front flange, 2" pipe & surface mounting
Maximum working pressure	100 bar / 1500 psi
Maximum process temperature	0 to 80°C (32 to 175°F)
Body material	Aluminum, Brass, SS 316 & Monel
Diaphragm	Buna-N, Viton, EPDM
Window	Float glass(Std.), toughened glass, acrylic & safety glass
Connection	1/4" NPT(F) (Std.), 1/4" BSP(F) and others through adaptor
Porting	In-line, rear, bottom, bottom & vent, in-line & vent, in-line & bottom in-line & back, bottom vent in-line
Over range protection	Up to the max. working pressure from high side
Protection for gauge & switch	IP 65 / NEMA-4

#### Options

Liquid filling  
Customer logo  
Dual scale  
Colour band

#### Switches

1 or 2 SPDTs with a terminal strip  
1 or 2 SPDTs with a DIN plug

#### Available in engineering polymer (EP) Case



6.0"



4.5"



2.5"

- Removable glass
- Strong and durable
- Panel mounting possible
- Condensation can be cleaned
- Light weight