



CZ 400DGC

ΔP Range: 50 - 0 - 50 mmH₂O
upto 600 - 0 - 600 mmH₂O

COMBINATIONS

Gauge



Specifications

Accuracy	±2% of the FSD (Ascending)
Migration	No migration. Zero leakage from high to low port
Range	min 50-0-50 upto 600 mmH ₂ O or similar ranges in other units
First marking on the scale	20% of the FSD
Sensing element	Diaphragm
Wetted parts	Diaphragm, body material, SS 302 spring & ceramic magnet
Case material & dial size	Stainless steel (SS 304): 3.5", 4", 4.5", 6.0" Engineering polymer: 4.5", 6" Bayonet: 4.0"
Mounting	Direct, front flange, 2" pipe & surface mounting
Maximum working pressure	35 bar / 500 psi.
Maximum process temperature	0 to 80°C (32 to 175°F)
Body material	Aluminum & SS 316
Diaphragm	Buna-N, Viton, EPDM
Window	Float glass (Std.), toughened glass, acrylic & safety glass
Connection	1/4" NPT(F) (Std.), 1/4" BSP(F) and others through adaptor
Porting	In-line, rear, bottom, bottom & vent, in-line & vent, in-line & bottom, in-line & back
Over range protection	Up to the max. working pressure from high side
Protection for gauge & switch	IP 65 / NEMA-4

Options

Liquid filling (glycerine/ silicone)
Customer logo
Dual scale
Color band
Filter mesh in (+) connection

Switches

Contact factory

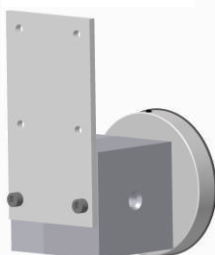
Available in engineering polymer (EP) Case



- Removable glass
- Strong and durable
- Panel mounting possible
- Condensation can be cleaned
- Light weight

MOUNTING BRACKETS

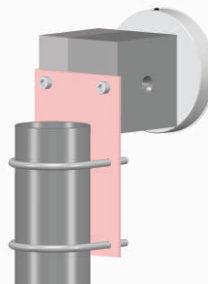
Surface mounting



Horizontal pipe mounting



Vertical pipe mounting



Panel / Flange mounting

