



## DX 20

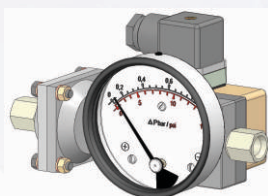
**ΔP Range:** 0 to 0.16 upto 2 bar  
0 to 2.4 upto 30 psi

### COMBINATIONS

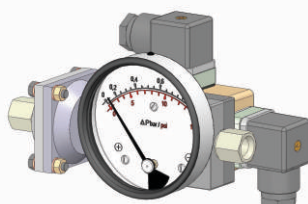
#### Gauge



#### Gauge+switch (With a DIN plug on top)

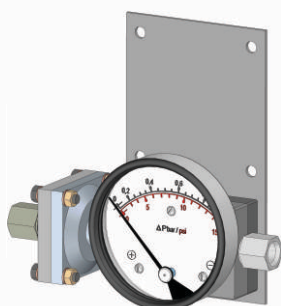


#### Gauge+switch (with 2 DIN plugs)

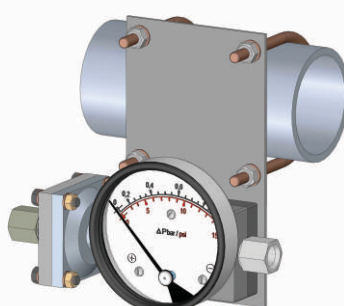


### MOUNTING BRACKETS

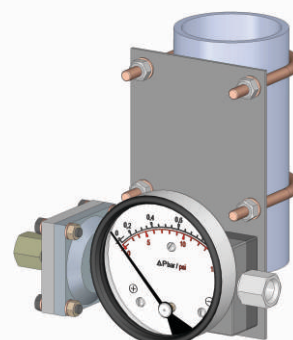
#### Surface mounting



#### Horizontal pipe mounting



#### Vertical pipe mounting



### Specifications

Accuracy	±5% of FSD (Ascending)
Migration	No migration ; Zero leakage from high to low port
Range	0-0.16 to 0-2 bar. bar/psi dual scale
First marking on the scale	15% of FSD
Sensing element	Diaphragm
Wetted parts	SS316 body, SS 302 spring, diaphragm & ceramic magnet
Case material & dial size	Stainless steel (SS 304): 2.5", 3.5", 4" Engineering polymer: 2.5"
Mounting	Direct, 2" pipe & surface mounting
Maximum working pressure	100 bar.
Maximum process temperature	0 to 80°C (32 to 175°F)
Enclosure	Engineering Polymer
Diaphragm	Buna-N, Viton, EPDM
Window	Float glass (Std.), toughened glass, acrylic & safety glass.
Connection	1/4" BSP(F) (Std.), Optional: 1/4" NPT(F)
Porting	In-line
Over range protection	Up to the max. working pressure from high side
Protection for gauge & switch	IP 65

### Options

### Switches (Adjustable in 35-100% of FSD)

Liquid filling (glycerine/ silicone)	1 or 2 SPSTs with a DIN plug
Red follower pointer	1 or 2 SPDTs with a DIN plug
Customer logo	
Dual scale	
Color band	

*DP range can be changed easily at site by replacing range spring.  
(Available only in gauges with color band or zones without any graduations)*

### Available in engineering polymer (EP) Case



- Removable glass
- Strong and durable
- Panel mounting possible
- Condensation can be cleaned
- Light weight