



Akron Electric (USA)

FCG (India)

HIRLEKAR PRECISION

EX 200DGR

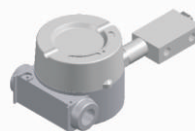
ΔP Range: 0 to 0.25 upto 7 bar
0 to 5 upto 100 psi

COMBINATIONS

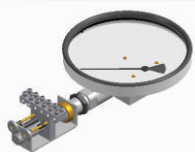
Gauge + switch
(with a terminal strip inside)



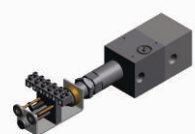
Switch



Gauge + switch
(Without Ex-proof enclosure)

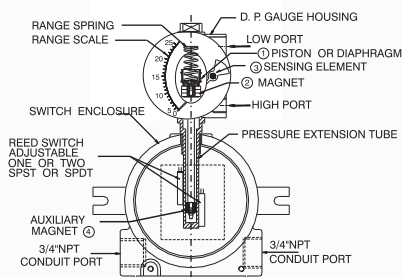


Switch*
(Without Ex-proof enclosure)



*Locally available explosion proof enclosures can be used

ASSEMBLY



Specifications

Accuracy	±2% of the FSD (Ascending)
Migration	No migration. Zero leakage from high to low port
Range	0-0.25 to 0-7 bar or equivalent range in other units
First marking on the scale	15% of the FSD
Sensing element	Diaphragm
Wetted parts	Diaphragm, Body material, SS 302 spring & ceramic magnet
Case material & dial size	Stainless steel (SS 304): 2.5", 3.5", 4", 4.5", 6.0" Engineering polymer: 2.5", 4.5", 6.0"
Mounting	Surface, 2" pipe mounting
Maximum working pressure	200 bar / 3000 psi
Maximum process temperature	0 to 80°C (32 to 175°F)
Body material	Aluminum, Brass, SS 316, Monel
Diaphragm	Buna-N, Viton, EPDM
Window	Float glass(Std.), toughened glass, acrylic & safety glass.
Connection	1/4" NPT(F) (Std.), 1/4" BSP(F) through adaptor
Porting	Bottom (right side), back
Over range protection	Up to the max. working pressure from high side only <i>Never pressurize only LP side</i>
Protection for gauge & switch	IP 65 / NEMA-4

Options

Liquid filling (glycerine/ silicone)
Red follower pointer
Customer logo
Dual scale
Color band
Filter mesh in (+) connection
Descending calibration

Switches (Adjustable in 30-100% of FSD)

1 or 2 SPSTs with a terminal strip
1 or 2 SPDTs with a terminal strip

Available in engineering polymer (EP) Case



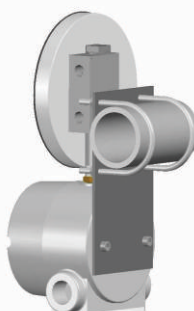
- Removable glass
- Strong and durable
- Panel mounting possible
- Condensation can be cleaned
- Light weight

Enclosure Approvals

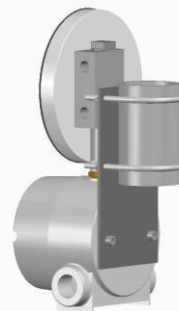
Ex-proof enclosure make	Certification	Electrical connection	Mounting
Akron Electric USA	UL, CSA, FM, CENELEC, KEMA / ATEX approved. Compliance to EN 50 014:1971+A1...A5 and EN 50 018: 1977+A1...A3. Ref: UL:E139669 / CSA:LR86146-5 KEMA: 03ATEX2460 U 0539 Ex II 2G EEx d II C	2 X 3/4" NPTF conduit ports on either side as shown	Two slots provided suitable for M6 / 1/4" UNC screw.
FCG India	Compliance to EN 50014: 1977 + A1:1999+A2:1999 and EN 50281-1-1:1998 + A1:2002 Ref: DNV-2006-OSL-ATEX-0075 / Ex II 2 GD EEx d IIC T6	3 X 3/4" ET conduit ports as shown.	Two elliptical holes provided suitable for M6 / 1/4"UNC screw.

MOUNTING BRACKETS

Horizontal pipe mounting



Vertical pipe mounting



Surface mounting

