



200 DPG

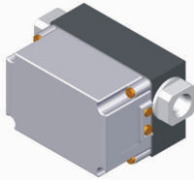
ΔP Range: 0 to 0.25 upto 70 bar
0 to 5 upto 1050 psi

COMBINATIONS

Gauge

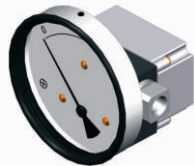


Switch



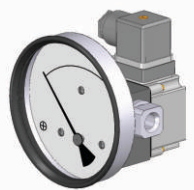
Gauge + switch

(with a terminal strip inside)



Gauge + switch

(with a DIN plug on top)



Specifications

Accuracy	±2% of the FSD (Ascending)
Migration	Minor from high to low port
Range	0-0.25 to 0-70 bar or equivalent range in other units
First marking on the scale	20% of the FSD
Sensing element	Piston
Wetted parts	Body material, SS 302 spring, ceramic magnet & seals
Case material & dial size	Stainless steel (SS 304): 2", 2.5", 3.5", 4", 4.5", 6.0" Engineering polymer: 2.5", 4.5", 6" Bayonet: 4.0"
Mounting	Direct, front flange, 2" pipe & surface mounting
Maximum working pressure	200 bar for Aluminum & Brass, 400 bar for SS & Monel
Maximum process temperature	0 to 80°C (32 to 175°F)
Body material	Aluminum, Brass, SS 316 & Monel
Seals	Buna-N, Viton, EPDM
Window	Float glass(Std.), toughened glass, acrylic & safety glass.
Connection	1/4" NPT(F) (Std.), 1/4" BSP(F) and others through adaptor
Porting	In-line, rear, bottom, in-line & bottom, in-line & back
Over range protection	Up to the max. working pressure from high & low side
Protection for gauge & switch	IP 65 / NEMA-4

Options

Liquid filling (glycerine/ silicone)
Red follower pointer
Customer logo
Dual scale
Color band
Filter mesh in (+) connection
Reverse port (<i>pointer moves from right to left</i>)
Descending calibration
Thick body for 450bar application

Switches (Adjustable in 20-100% of FSD)

1 or 2 SPSTs with a DIN plug
1 or 2 SPSTs with a terminal strip
1 or 2 SPSTs with a built in relay
1 or 2 SPDTs with a DIN plug
1 or 2 SPDTs with a terminal strip

Available in engineering polymer (EP) Case



- Removable glass
- Strong and durable
- Panel mounting possible
- Condensation can be cleaned
- Light weight

MOUNTING BRACKETS

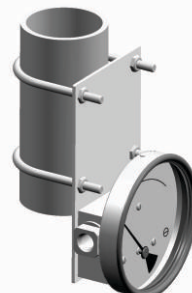
Surface mounting



Horizontal pipe mounting



Vertical pipe mounting



Panel / Flange mounting

