

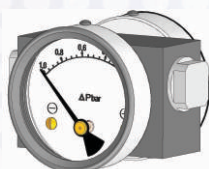


D200 DPG

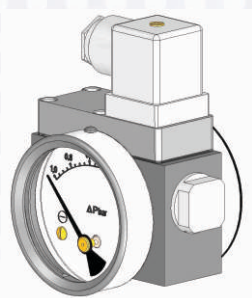
ΔP Range: 0 to 0.25 upto 10 bar
0 to 5 upto 150 psi

COMBINATIONS

Gauge



Gauge+switch (with a DIN plug on top)



Specifications

| | |
|-------------------------------|---|
| Accuracy | ±5% of the FSD (Ascending) |
| Migration | Minor from high to low port |
| Range | 0-0.25 to 0-10 bar or equivalent range in other units |
| First marking on the scale | 20% of the FSD |
| Sensing element | Piston |
| Wetted parts | Body material, SS 302 spring, ceramic magnet & seals |
| Case material & dial size | Stainless steel (SS 304): 2.5" |
| Mounting | Direct |
| Maximum working pressure | 350 bar for Al, Br ; 450 bar for SS |
| Maximum process temperature | 0 to 80°C (32 to 175°F) |
| Body material | Aluminum, SS 316, Brass |
| Seals | Buna-N, Viton & EPDM |
| Window | Float glass(Std.), toughened glass, acrylic & safety glass. |
| Connection | 1/4" NPT(F) (Std.), 1/4" BSP(F) |
| Porting | In-line, bottom |
| Over range protection | Up to the max. working pressure from high & low side |
| Protection for gauge & switch | IP 65 / NEMA-4 |

Options

Liquid filling (glycerine/ silicone)
Red follower pointer
Customer logo
Dual scale
Color band
Filter mesh in (+) connection

Switches (Adjustable in 20-100% of FSD)

1 or 2 SPSTs with a DIN plug on top
1 SPDT with a DIN plug on top

MOUNTING BRACKET

Direct mounting (Inline porting)



Direct mounting (bottom porting)

