



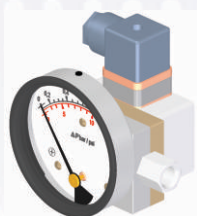
## COMBINATIONS

### Gauge



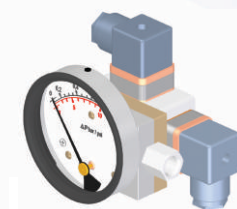
### Gauge+switch

(with a DIN plug on top)



### Gauge+switch

(with 2 DIN plugs)

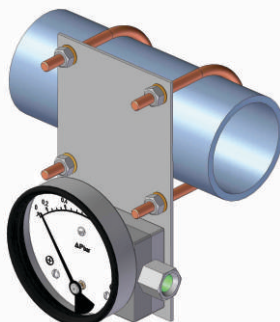


## MOUNTING BRACKETS

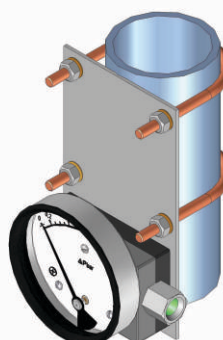
### Surface mounting



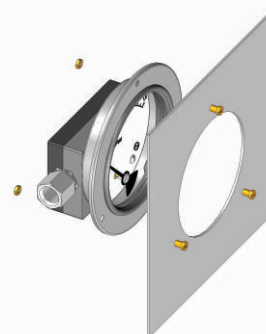
### Horizontal pipe mounting



### Vertical pipe mounting



### Panel / Flange mounting



## DX 10

**ΔP Range:** 0 to 0.25 upto 10 bar  
0 to 3.5 upto 140 psi

## Specifications

Accuracy	±3% of the FSD (Ascending)
Migration	Minor from high to low port
Range	0-0.25 to 0-10 bar/psi or psi/kPa dual scale
First marking on the scale	15% of the FSD
Sensing element	Magnetic piston with compression spring
Wetted parts	SS 316, SS 302 compression spring, seals & ceramic magnet
Case material & dial size	Stainless steel (SS 304): 2.5", 3.5", 4.0" Engineering polymer: 2.5" Bayonet: 4.0"
Mounting	Direct, front flange, 2" pipe & surface mounting
Maximum working pressure	100, 250 & 400 bar.
Maximum process temperature	0 to 80°C (32 to 175°F)
Enclosure	Engineering Polymer
Seals	Buna-N & Viton
Window	Float glass (Std.), toughened glass, acrylic & safety glass.
Connection	1/4" BSP(F) Std. Optional 1/4" NPT(F)
Porting	In-line
Over range protection	Up to the max. working pressure from high & low side
Protection for gauge & switch	IP 65

## Options

## Switches (Adjustable in 20-100% of FSD)

Liquid filling (glycerine/ silicone)	1 or 2 SPSTs with a DIN plug
Red follower pointer	1 or 2 SPDTs with a DIN plug
Customer logo	
Dual scale	
Color band	

*DP range can be changed easily at site by replacing range spring.*

*(Available only in gauges with colour band or zones without any graduations)*

## Available in engineering polymer (EP) Case



6.0"



4.5"



2.5"

- Removable glass
- Strong and durable
- Panel mounting possible
- Condensation can be cleaned
- Light weight