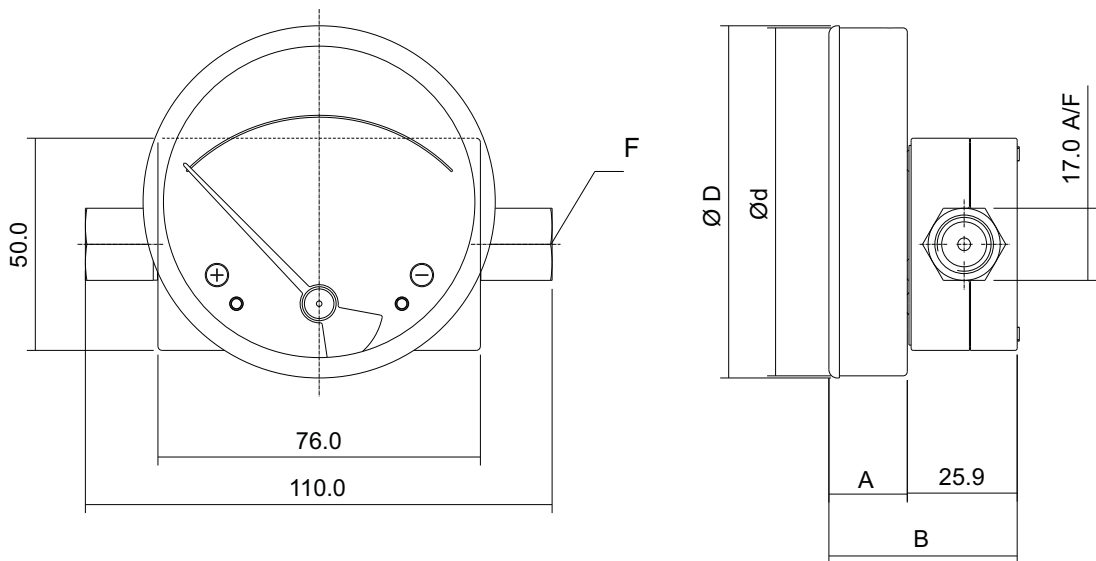


# DX 10 (Piston Gauge)

## STANDARD DIMENSIONS

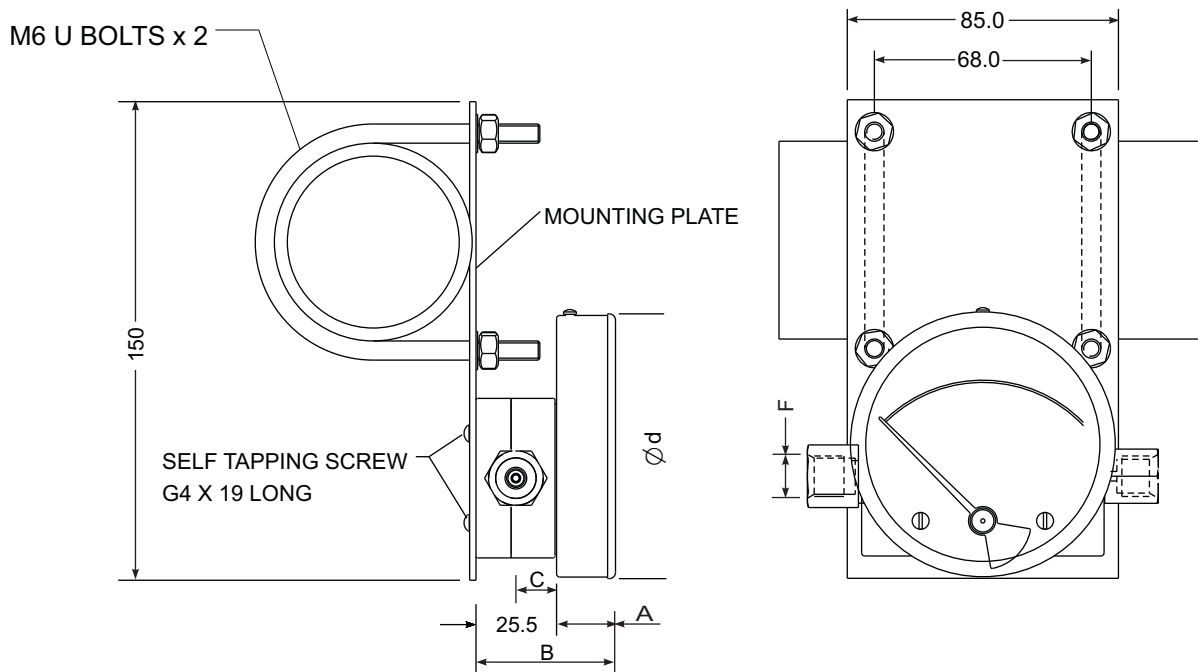
**HIRLEKAR**  
PRECISION



DIAL Ø	F	A	B	C	d	D
80 (3.5")	1/4"BSP - 1/4"NPT	19	44	12.5	82	13
100 (4")	1/4"BSP - 1/4"NPT	19	44	12.5	102	104.3

\* PANEL CUT OUT = d + 1

## Mounting Bracket

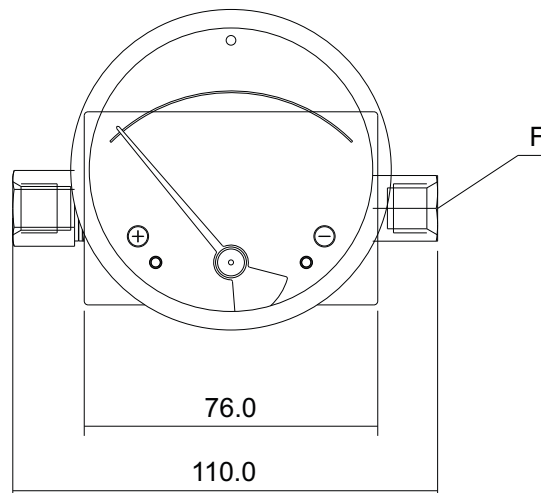
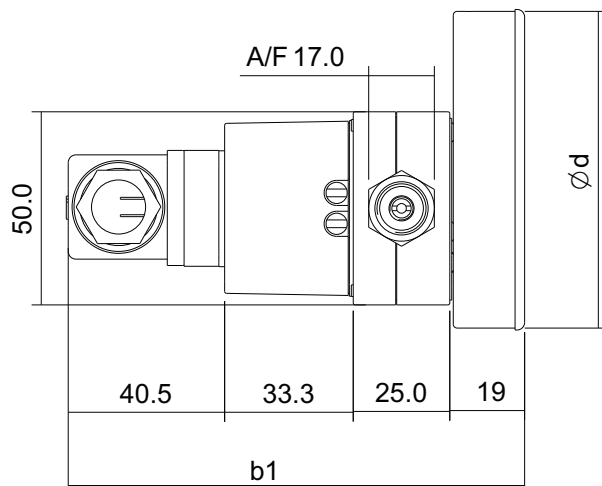


DIAL Ø	F	A	B	C	d	D
80 (3.5")	1/4"BSP - 1/4"NPT	19	44	12.5	82	13
100 (4")	1/4"BSP - 1/4"NPT	19	44	12.5	102	104.3

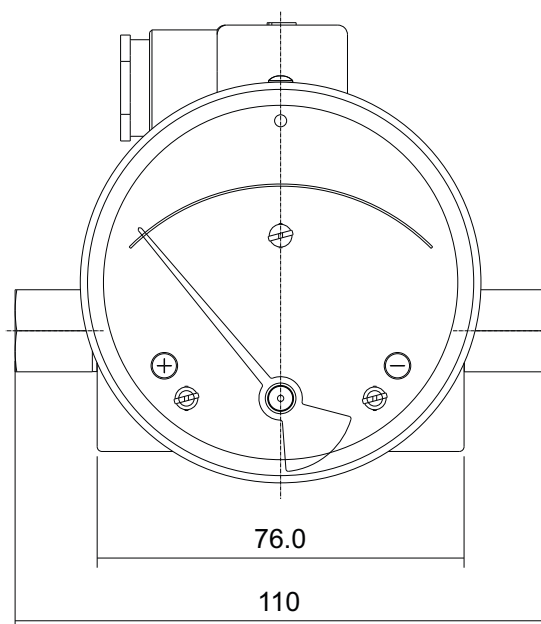
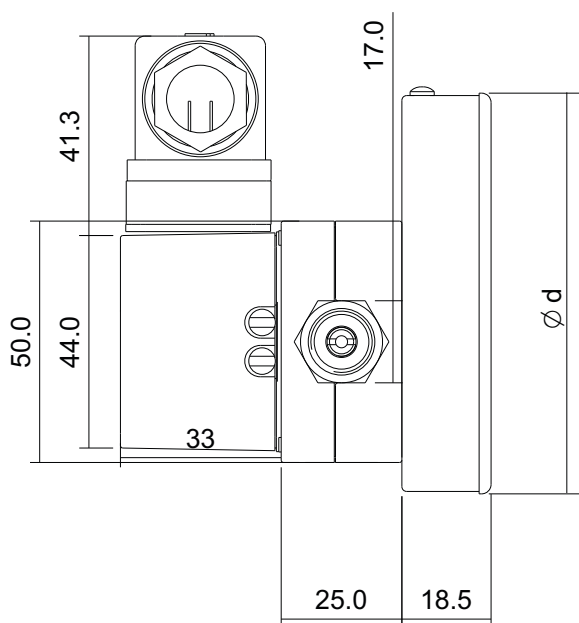
\* PANEL CUT OUT = d + 1

## Gauge+Switch with Reed Contacts with DIN Plug at Back

DIAL $\varnothing$	F	d	b1
80 (3.5")	1/4"BSP - 1/4"NPT	83	103.5
100 (4")	1/4"BSP - 1/4"NPT	104.3	103.5



## Gauge+Switch with Reed Contacts with DIN Plug on Top



DIAL $\varnothing$	F	b1	c1	d
80 (3.5")	1/4"BSP - 1/4"NPT	79	47.5	83
100 (4")	1/4"BSP - 1/4"NPT	79	47.5	104.3