

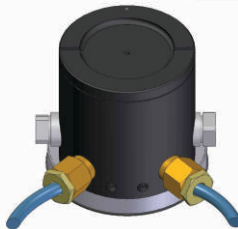
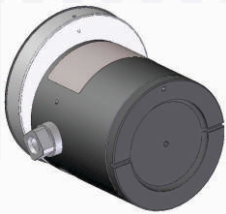
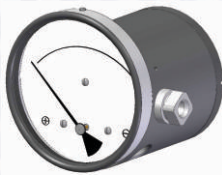


PR 10

ΔP Range: 0 to 0.25 upto 10 bar
0 to 5 upto 150 psi

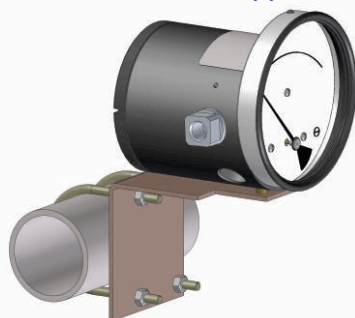
COMBINATIONS

Gauge + switch
(with a terminal strip inside)

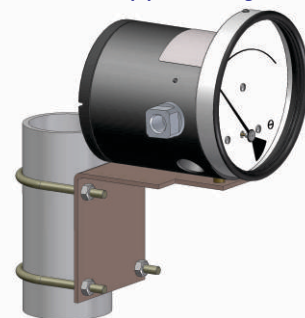


COMMON MOUNTING BRACKET

Horizontal pipe mounting



Vertical pipe mounting



Specifications

Accuracy	±2% of the FSD (Ascending)
Migration	Minor from high to low port
Range	0-0.25 to 0-10 bar or equivalent range in other units
First marking on the scale	20% of the FSD
Sensing element	Piston
Wetted parts	Body material, SS 302 spring, ceramic magnet & diaphragm
Case material & dial size	Stainless steel (SS 304): 4.5", 6.0"
Mounting	Direct or 2" horizontal / vertical pipe mounting bracket
Maximum working pressure	400 bar / 6000 psi
Maximum process temperature	0 to 80°C (32 to 175°F)
Body material	SS316 attached to flameproof aluminum enclosure
Diaphragm	Buna-N, Viton & EPDM.
Window	Float glass(Std.), toughened glass, & safety glass.
Connection	1/4" NPT(F) (Std.), 1/4" BSP(F) through adaptor
Porting	In-line only
Over range protection	Up to the max. working pressure from high & low side
Protection for gauge & switch	IP 66/ NEMA-4
Electrical connection	1/2"NPT(F) for 2 conduit ports at bottom, left and right 40° from center line
	Cable glands and plugs are not supplied with the instrument.
Net weight	Approximately 2.000 kgs.

Options

Switches (Adjustable in 30-100% of FSD)

Customer logo	1 or 2 SPSTs with a terminal strip
Dual scale	1 or 2 SPDTs with a terminal strip
Color band	
Filter mesh in (+) connection	

Approval

This gauge is
Ex d IIC T6 IP66
approved